

# Backup and Restore

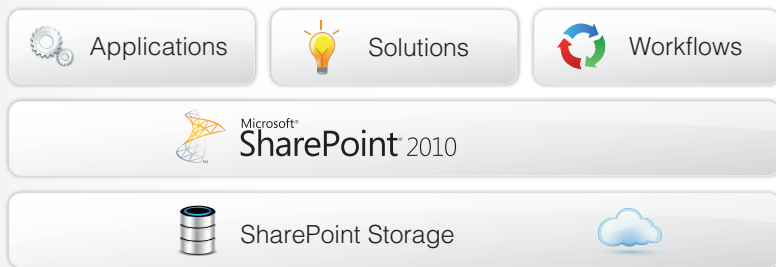


Migrate. Integrate. Manage. Optimize. **Protect.** Report.

**Protect.** Business-aware, comprehensive, SLA-driven protection of Microsoft® SharePoint® 2010 environments.

## Key Benefits

- Protect your organization from disasters with truly comprehensive backup for your entire SharePoint environment, including all content, customizations, solutions, and features
- Minimize business disruptions caused by service interruptions or accidental deletions with efficient recovery all SharePoint components, databases, indexes, and configurations
- Satisfy even the most aggressive SLAs by minimizing downtime, data loss, and restore times with granular restore of select SharePoint components
- Track, manage, and report on all backup and restore processes through a centralized management console to monitor and enforce compliance with SharePoint protection policies



Backup

Restore

**Protect all critical SharePoint assets – no matter where they reside in your environment.**

DocAve Data Protection Scope

## Fast, Flexible, and Intelligent Backup and Restore for SharePoint 2010

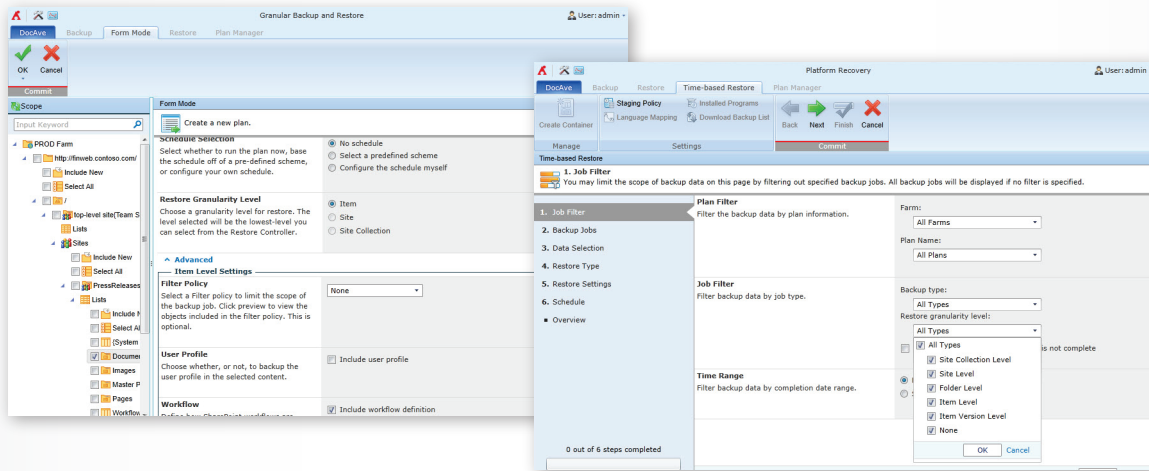
DocAve Backup and Restore for SharePoint 2010 provides full-fidelity backup and recovery, protecting individual content items to entire SharePoint environments and all farm-level components, maintaining all metadata, security settings, and version histories. Featuring a highly intuitive user interface, enterprise-strength scalability, and deep integration with leading hardware providers, DocAve Backup and Restore helps to simplify truly comprehensive SharePoint protection.



**FREE**  
30-DAY TRIAL

## Technical Overview

- Backup and recover entire SharePoint farms, or selective components, including back-end SQL databases, all configurations, Index/Job servers, front-end IIS settings, file system resources, and custom application databases
- Full-fidelity backup and restore of all SharePoint content – including sites, lists, libraries, workflow definition and instance, configurations, access permissions, metadata, and version histories
- Full, incremental, and differential backup capabilities for selective SharePoint farm components enable backup plans and schedules to focus on frequent backup of high-priority data, improving backup operations and storage efficiency
- Rapid restore of SharePoint content with AvePoint's InstaMount™ technology, enabling fast recovery of granular content from a full database backup without first staging the database
- Leverage DocAve's centralized browser-based interface to support and integrate all your SharePoint environments, supporting true multi-farm protection
- Simplify backup and restore planning with "point & click" content selection and wizards for step-by-step guidance
- Backup to centrally managed tiered storage, leveraging built-in encryption, compression, and pruning policies
- Backup to storage platforms including NetApp, EMC Centera and Dell DX Object Storage to take advantage of advanced features like de-duplication and self-healing



**Configure plan settings for ad-hoc backups, including storage location, data compression, encryption, filter policy, workflows, and notification type.**

As with all DocAve products, DocAve Backup and Restore leverages only fully supported Microsoft methodologies and APIs.

## Next Steps

### How to Buy DocAve

Call: +65-6538-2088  
E-mail: [SalesSG@AvePoint.com](mailto:SalesSG@AvePoint.com)  
Evaluate DocAve for free at:  
[www.AvePoint.sg/download](http://www.AvePoint.sg/download)

AvePoint Singapore  
30 Raffles Place  
#22-04 Chevron House  
Singapore 048622

See why you should choose AvePoint as a strategic SharePoint partner, visit [www.avepoint.sg/about](http://www.avepoint.sg/about).

Join the AvePoint community at [www.docave.com](http://www.docave.com).